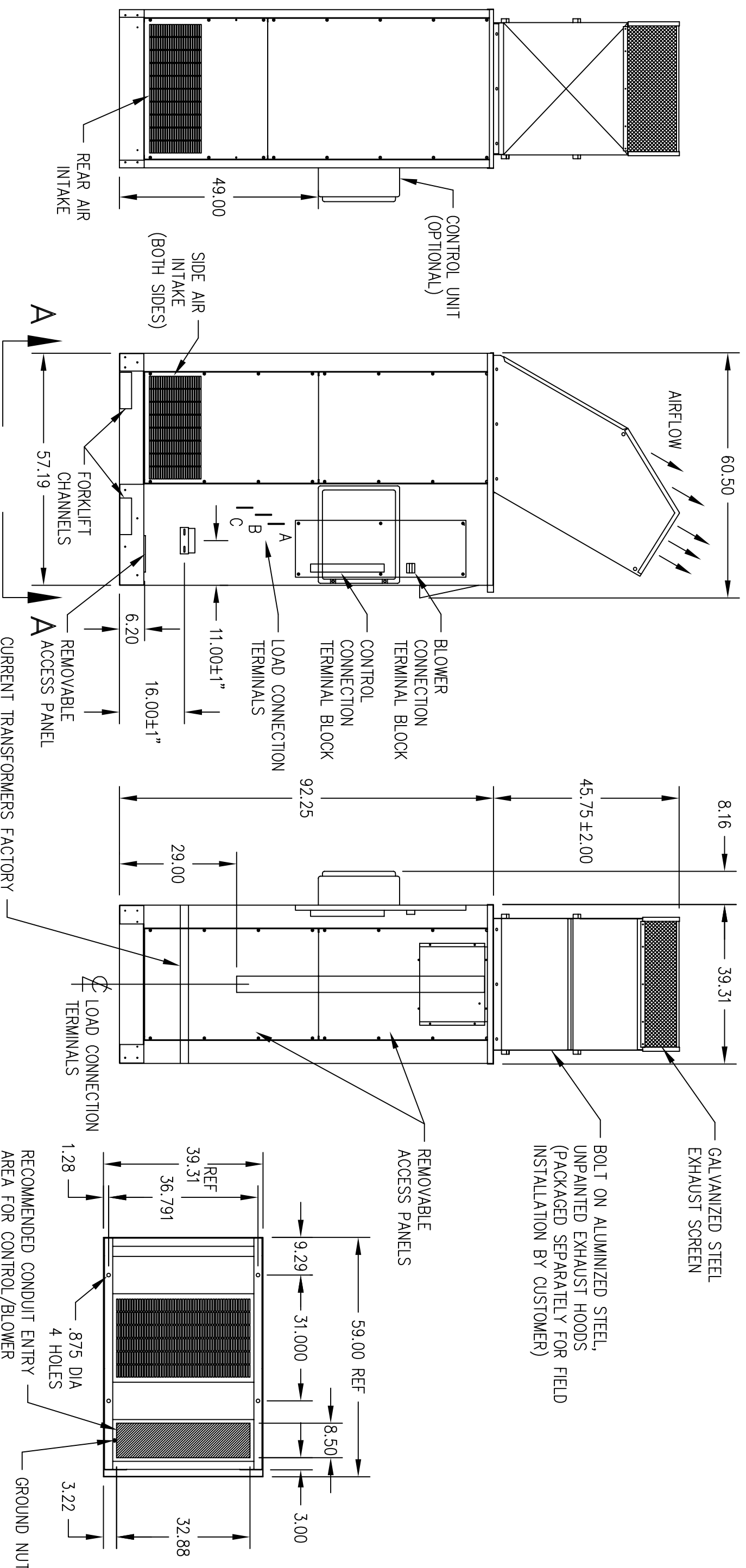


**AVTRON MODEL K875A  
OUTDOOR LOAD BANK  
OUTLINE DRAWING SET**

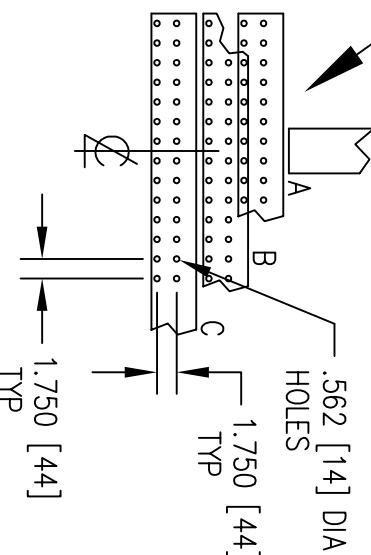
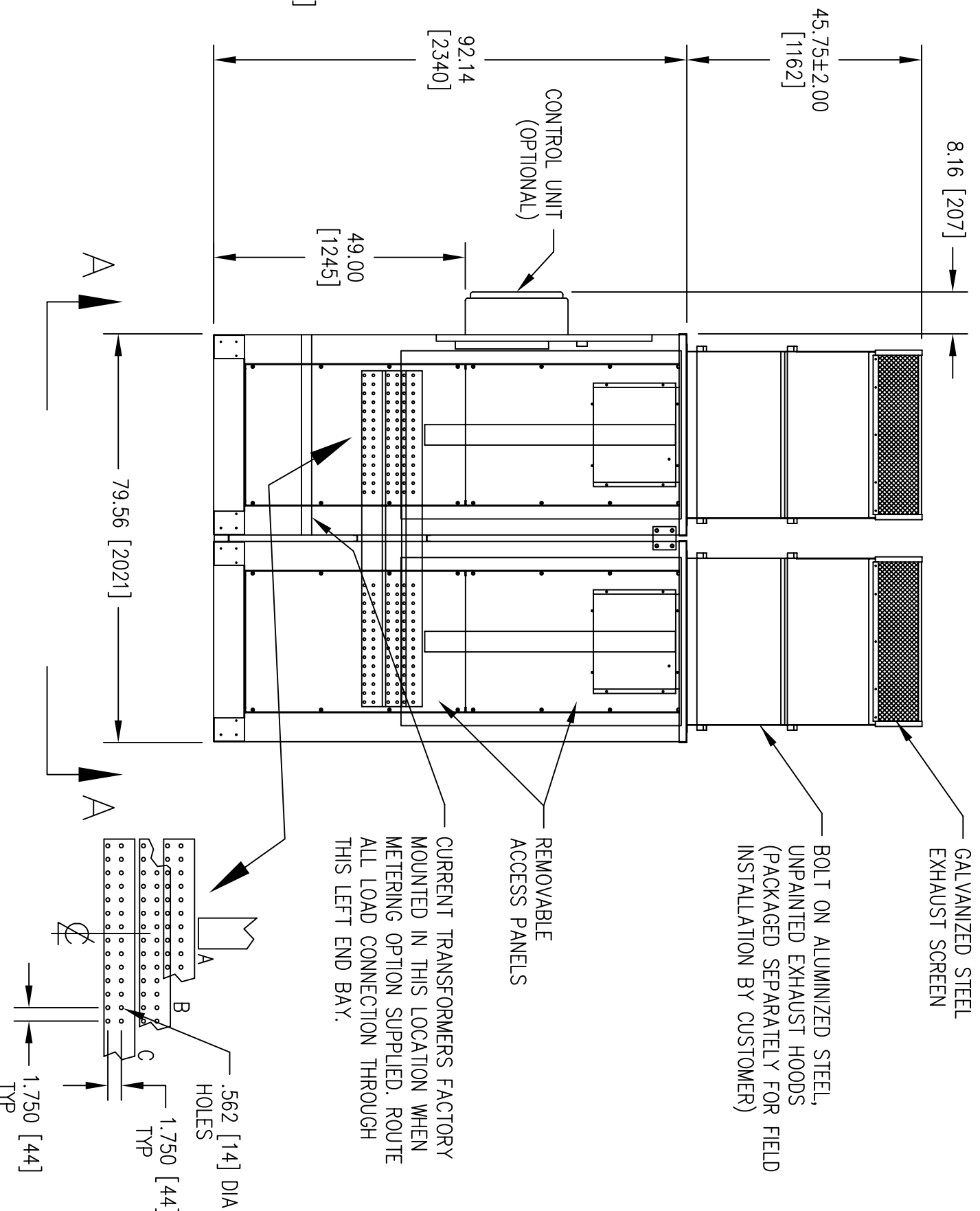
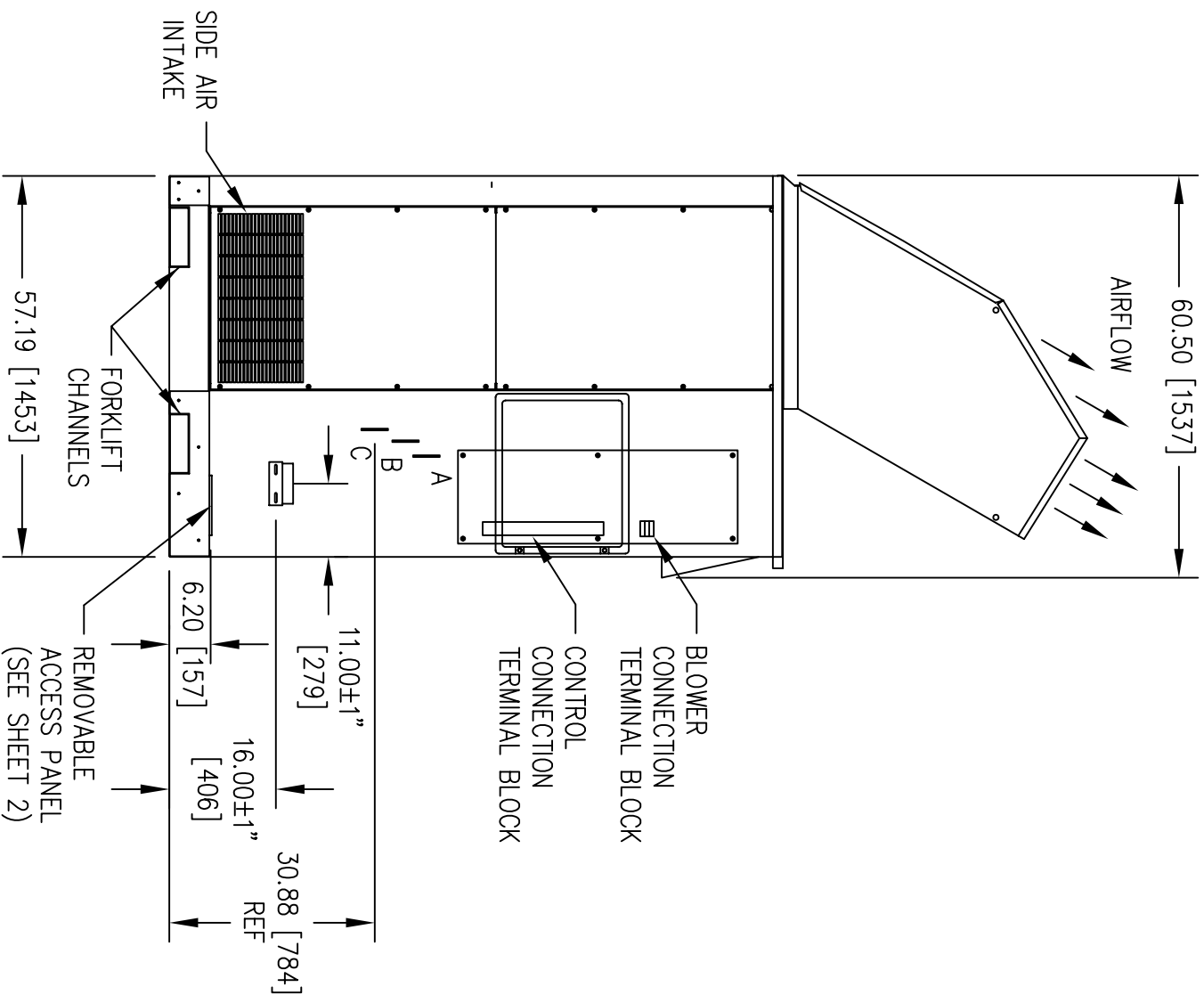


- AS A GENERAL GUIDE, THE MINIMUM CLEARANCE REQUIRED FROM ANY OBSTRUCTION IS 6 FEET.
- PROVIDE A CLEAR VERTICAL EXHAUST FIELD. REVIEW MANUAL FOR DETAILED INSTALLATION AND SITE CONDITIONS.
- MAXIMUM INTAKE AIR TEMPERATURE IS 120°F. INTAKE AIR IS DRAWN IN FROM SIDES AND REAR OF UNIT.
- ALL DIMENSIONS ARE APPROX. IN INCHES
- WEIGHT: 1500 LBS APPROX

**FOR APPLICATION ENGINEERING USAGE ONLY**

VIEW A--A

THIS DOCUMENT CONTAINS PROPRIETARY INFORMATION OF AVTRON MFG., INC. AND MAY NOT BE DISCLOSED TO OTHERS OR USED FOR MANUFACTURING PURPOSES WITHOUT THE WRITTEN CONSENT OF AVTRON MFG.			
CD917	D	ADDED C.T. BRACKET FACKELMANN	1/7/05
CC646	C	REV TITLE PER ECN	4/27/01
CC219	B	REV PER ECN	6/26/00
CA771	A	WEIGHT WAS 22000 LBS. FACKELMANN	8/21/98
ECN NO.	REV LET.	CHANGE	CHG'D
DRAWN		FLAUTO	DATE 5-4-98
CHECKED		J.FLAUTO	SCALE 5-4-98
APPROVED		D.KOZAR	SCALE 3/64
MODEL		K875A	
		LOAD BANK, OUTDOOR, (1) SINGLE BAY	
DRAWING NUMBER		SB2793	
SHEET		1 OF 1	
OUTLINE DRAWING			



**FOR APPLICATION ENGINEERING USAGE ONLY**

5. AS A GENERAL GUIDE, THE MINIMUM CLEARANCE REQUIRED FROM ANY OBSTRUCTION IS 6 FEET.
  4. PROVIDE A CLEAR VERTICAL EXHAUST FIELD. REVIEW MANUAL FOR DETAILED INSTALLATION AND SITE CONDITIONS.
  3. MAXIMUM INTAKE AIR TEMPERATURE IS 120°F. INTAKE AIR IS DRAWN IN FROM SIDES AND REAR OF UNIT.
  2. ALL DIMENSIONS ARE APPROX. IN INCHES [METRIC]
  1. WEIGHT: 3000 LBS [1361 KG] APPROX
- NOTES:

THIS DOCUMENT CONTAINS PROPRIETARY INFORMATION OF AVTRON MFG., INC. AND MAY NOT BE DISCLOSED TO OTHERS OR USED FOR MANUFACTURING PURPOSES WITHOUT THE WRITTEN CONSENT OF AVTRON MFG.

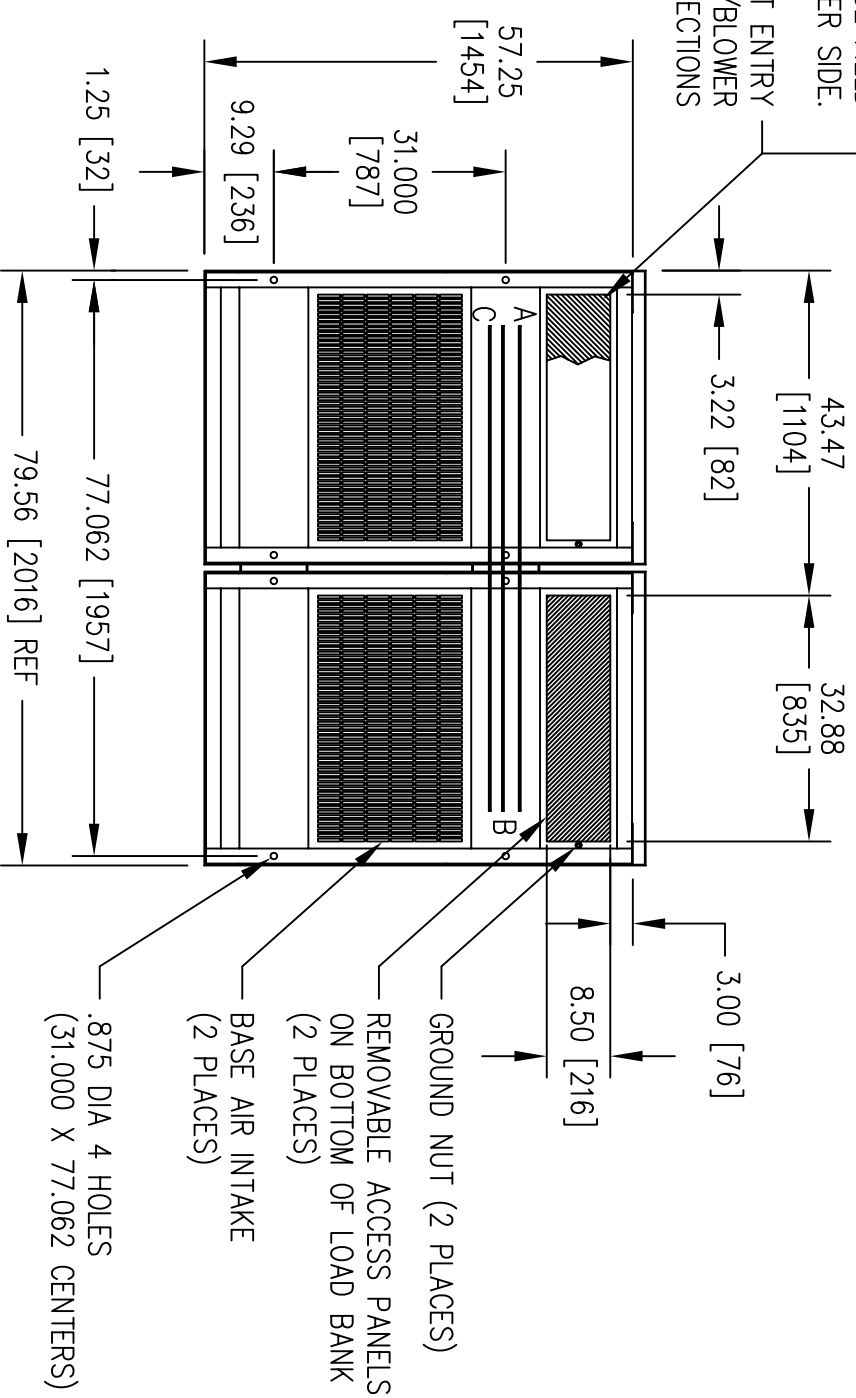
CD917	CC646	CC375	CC219	ECN NO.	REV LET.	CHANGE	CHK'D	CHK'D	DATE	BY	DATE	SCALE
CD917	CC646	CC375	CC219	ECN NO.	REV LET.	CHANGE	CHK'D	CHK'D	2/9/06	D.KOZAR	8-13-98	3/64
ADDED METRIC DIMS FOR C.T. BRACKET		REV TITLE PER EGN	REV PER EGN	REV PER EGN	REV PER EGN	CHANGE	CHK'D	CHK'D	1/7/05	D.KOZAR	8-25-98	
FACKELMANN		FACKELMANN	FACKELMANN	FACKELMANN	FACKELMANN	CHANGE	CHK'D	CHK'D	4/27/01	D.KOZAR	8-25-98	
C.T. BRACKET		REV PER EGN	REV PER EGN	REV PER EGN	REV PER EGN	CHANGE	CHK'D	CHK'D	11/2/00	J.WEMERY	8-25-98	
FACKELMANN		FACKELMANN	FACKELMANN	FACKELMANN	FACKELMANN	CHANGE	CHK'D	CHK'D	6/26/00	K.KUK	8-25-98	
FACKELMANN		FACKELMANN	FACKELMANN	FACKELMANN	FACKELMANN	CHANGE	CHK'D	CHK'D				

**AVTRON** MANUFACTURING, INC.  
 INDEPENDENCE, OH

DRAWING NUMBER  
**SB2827**  
 SHEET 1 OF 2  
 OUTLINE DRAWING

LOAD BANK, OUTDOOR,  
 (2) TWO BAY

WHEN METERING OPTION SUPPLIED,  
CURRENT TRANSFORMERS MOUNTED  
THIS SIDE. THESE CAN BE FIELD  
RELOCATED TO OTHER SIDE.  
RECOMMENDED CONDUIT ENTRY  
AREA FOR CONTROL/BLOWER  
AND LOAD CONNECTIONS



VIEW A-A

FOR APPLICATION ENGINEERING USAGE ONLY

CE335	E	ADDED METRIC DIMS	Fackelmann	2/9/06	D.KOZAR
CD917	D	REV SH1 1 PER ECN	FACKELMANN	1/7/05	D.KOZAR
CC646	C	REV TITLE PER ECN	FACKELMANN	4/27/01	D.KOZAR
CC375	B	REV PER ECN	FACKELMANN	11/2/00	J.WEMERY
CC219	A	REV SH1 1 PER ECN	FACKELMANN	6/26/00	K.KUK
ECN	REV	CHANGE	CHG'D	CHK'D	
NO.	LET.				

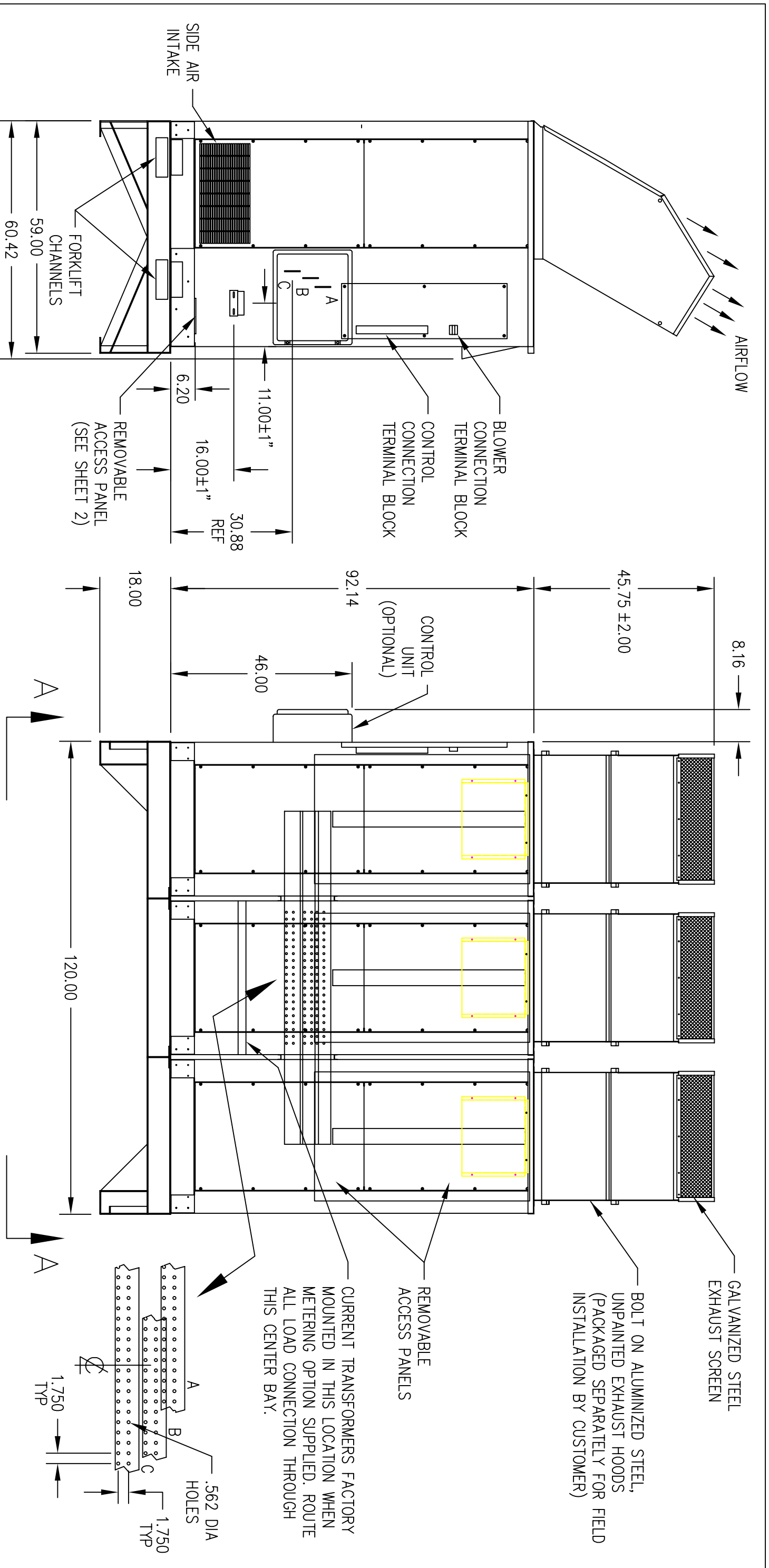
THIS DOCUMENT CONTAINS  
PROPRIETARY INFORMATION OF  
AVTRON MFG., INC. AND MAY  
NOT BE DISCLOSED TO OTHERS  
OR USED FOR MANUFACTURING  
PURPOSES WITHOUT THE WRITTEN  
CONSENT OF AVTRON MFG.

**AVTRON** MANUFACTURING, INC.  
INDEPENDENCE, OH  
LOAD BANK, OUTDOOR,  
(2) TWO BAY

DRAWING NUMBER  
SB2827  
SHEET 2 OF 2  
OUTLINE DRAWING

SEE SHEET 1 FOR NOTES

NOTES:



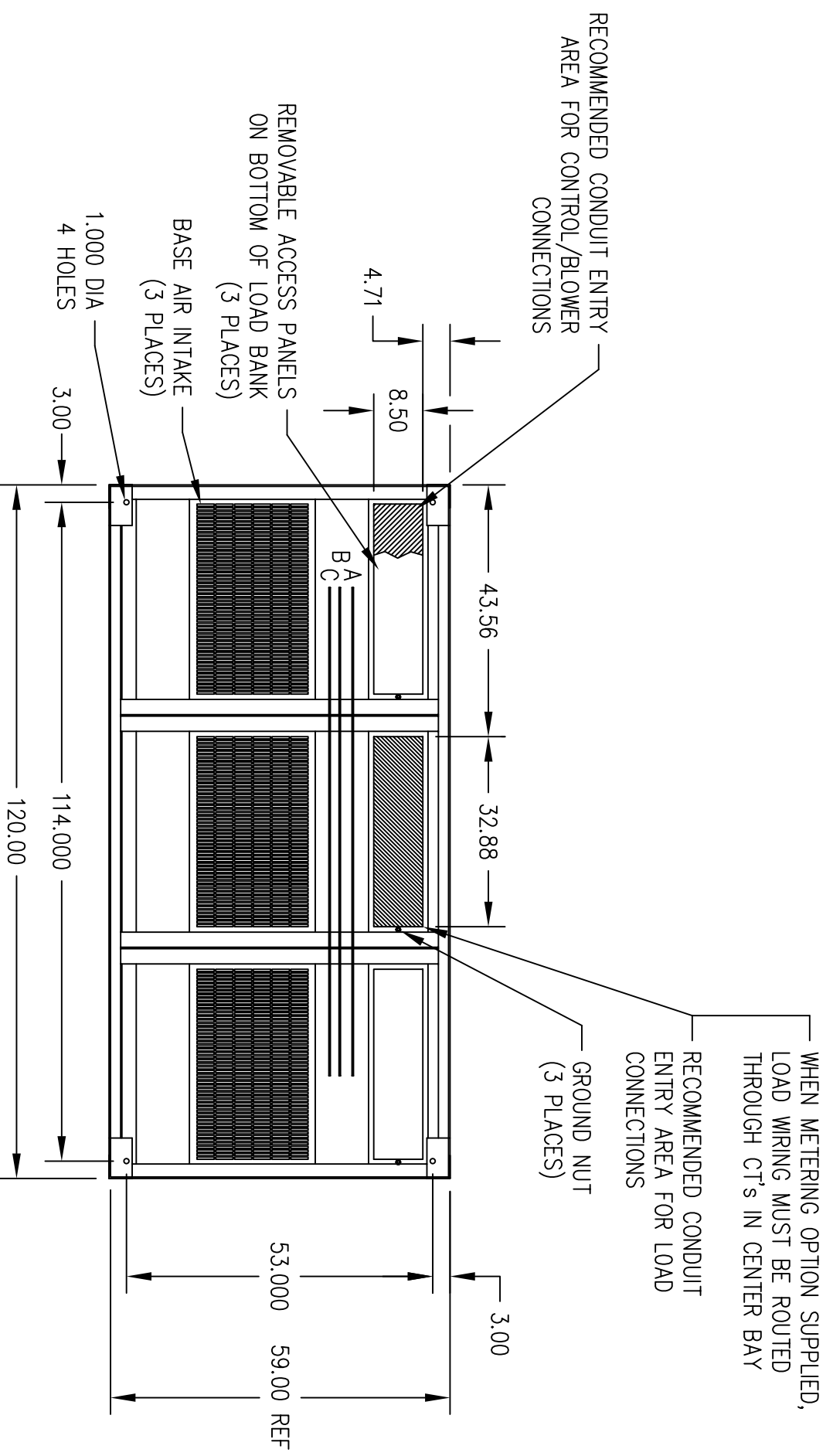
5. AS A GENERAL GUIDE, THE MINIMUM CLEARANCE REQUIRED FROM ANY OBSTRUCTION IS 6 FEET.
  4. PROVIDE A CLEAR VERTICAL EXHAUST FIELD. REVIEW MANUAL FOR DETAILED INSTALLATION AND SITE CONDITIONS.
  3. MAXIMUM INTAKE AIR TEMPERATURE IS 120°F. INTAKE AIR IS DRAWN IN FROM SIDES, END AND BOTTOM OF UNIT.
  2. ALL DIMENSIONS ARE APPROX. IN INCHES
  1. WEIGHT: 5500 LBS APPROX
- NOTES:

THIS DOCUMENT CONTAINS PROPRIETARY INFORMATION OF AVTRON MFG., INC. AND MAY NOT BE DISCLOSED TO OTHERS OR USED FOR MANUFACTURING PURPOSES WITHOUT THE WRITTEN CONSENT OF AVTRON MFG.

NO.	REV	CHANGE	CHG'D	CHK'D
CD917	H	ADDED DIMS FOR C.T. BRACKET	1/7/05	D.KOZAR
CC646	G	REV TITLE PER ECN	4/27/01	D.KOZAR
CC375	F	REV PER ECN	11/2/00	J.WEMERY
CC219	E	ADDED OPTIONAL CONTROL UNIT	6/26/00	K.KUK
CB374	D	REV PER ECN	10/22/99	J.WEMERY
CA771	C	WEIGHT WAS 6800 LBS	8/21/98	D.KOZAR
CA722	B	REV PER ECN	7/14/98	KOZAR
CA632	A	SEE SHT 2	5/5/98	KOZAR

**FOR APPLICATION ENGINEERING USAGE ONLY**

DATE	2/6/98	<p>AVTRON MANUFACTURING, INC. INDEPENDENCE, OH</p>	<p>DRAWING NUMBER <b>SB2770</b></p> <p>SHEET 1 OF 2</p> <p>OUTLINE DRAWING</p>
DATE	2/10/98		
DATE	2/10/98	<p>LOAD BANK, OUTDOOR, (3) TRIPLE BAY</p>	



VIEW A--A

FOR APPLICATION ENGINEERING USAGE ONLY

THIS DOCUMENT CONTAINS PROPRIETARY INFORMATION OF AVTRON MFG., INC. AND MAY NOT BE DISCLOSED TO OTHERS OR USED FOR MANUFACTURING PURPOSES WITHOUT THE WRITTEN CONSENT OF AVTRON MFG.

CD917	H	REV SHEET 1 PER ECN	FACKELMANN	1/7/05	D.KOZAR
CG646	G	REV TITLE PER ECN	FACKELMANN	4/27/01	D.KOZAR
CC375	F	REV PER ECN	FACKELMANN	11/2/00	J.WEMERY
CC219	E	REV SHEET 1 PER ECN	FACKELMANN	6/26/00	K.KUK
CB374	D	REV PER ECN	FACKELMANN	10/22/99	J.WEMERY
CA771	C	REV SHEET 1 PER ECN	FACKELMANN	8/21/98	D.KOZAR
CA722	B	MOVED CONDUIT ENTRY FOR CONTROL/BLOWER FROM RIGHT TO LEFT SIDE	FACKELMANN	7/14/98	KOZAR
CA632	A	REV SHEET 1 PER ECN	FLAUTO	5/5/98	KOZAR
ECN NO.	REV LET.	CHANGE	CHG'D	CHG'D	CHK'D

DRAWN	FLAUTO	DATE	2/6/98
CHECKED	D.KOZAR	SCALE	2/10/98
APPROVED	J.WEMERY	SCALE	3/64
MODEL	K875A		

**AVTRON** MANUFACTURING, INC.  
INDEPENDENCE, OH

LOAD BANK, OUTDOOR,  
(3) TRIPLE BAY

DRAWING NUMBER  
**SB2770**  
SHEET 2 OF 2  
OUTLINE DRAWING

SEE SHEET 1 FOR NOTES

NOTES: