

InteliVision

CONTROLLER DISPLAY UNIT



Description

InteliVision is a new generation display unit for either InteliGen^{NT} / InteliSys^{NT} or InteliDrive controllers. It is designed as a simple, easy to use Plug and Play solution and has been developed from our original IS-Display.

The new InteliVision screen features many significant improvements such as the large high-resolution colour TFT display, which helps visibility and definition for onscreen information. The control interface has also been updated with user-friendly intuitive active buttons - giving users access to more information in less time. InteliVision also features our unique TRENDS monitoring as a standard feature, helping you evaluate past events easily on one screen.

The InteliVision cut-out size is the same as the IS-Display (InteliSys^{NT}), so InteliVision can be easily used as a replacement for (or an alternative to) IS-Display. Regardless of the size it can be also used as a replacement for (or an alternative to) IG-Display or I-RD-CAN.

InteliVision includes ComAp's standard communication interface using RS232/485 and CAN bus communication. Designed to be mounted in both monitoring and engine room, InteliVision gives complete access to all control functions when connected to InteliGen^{NT} / InteliSys^{NT} or InteliDrive controllers.

Benefits

- ▶ Large, high-resolution screen
- ▶ Colour TFT display
- ▶ TRENDS monitoring screen
- ▶ Simpler, faster and more intuitive control
- ▶ More information in less time
- ▶ Same dimensions as IS-Display (InteliSys^{NT})
- ▶ IS-NT-BB can be mounted to the rear side of InteliVision
- ▶ Plug and Play operation (auto configuration based on controller application)
- ▶ Universal solution for both controller families - IGS-NT and ID
- ▶ Direct connection to the controller (converters are not needed)

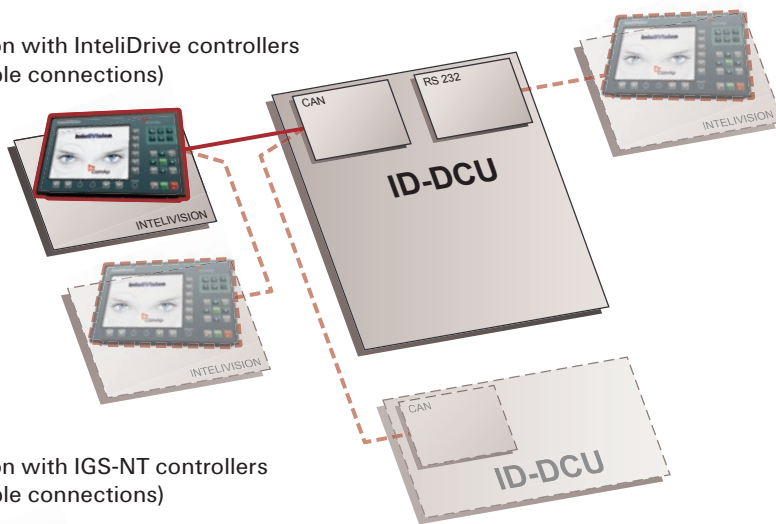


ComAp is a member of AMPS
(The Association of Manufacturers
of Power generating Systems).

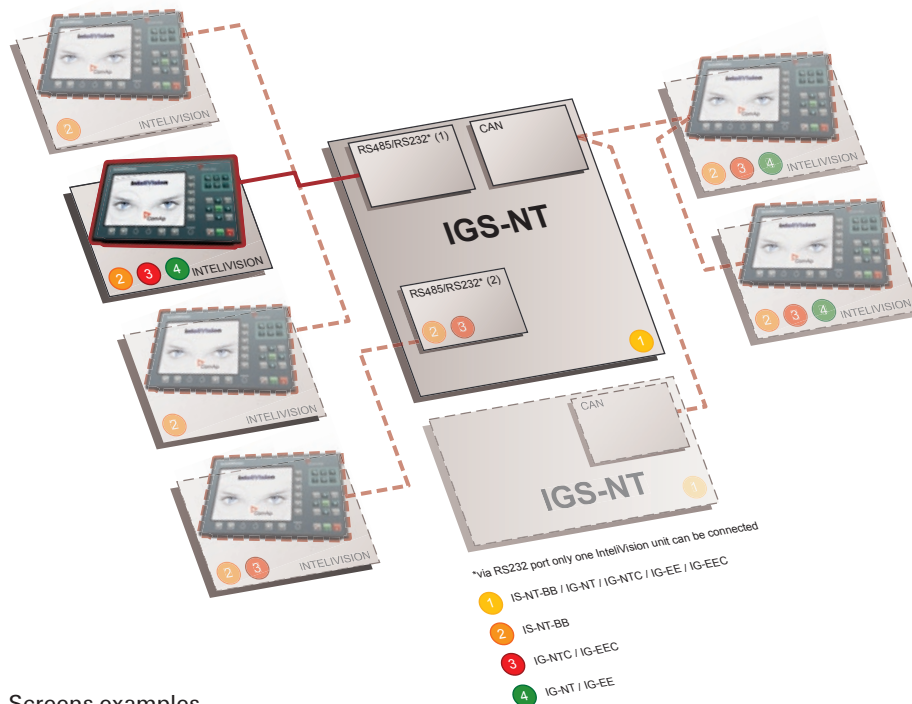


ComAp products meet the highest standards, with every stage of production undertaken in accordance with the ISO certification obtained in 1998.

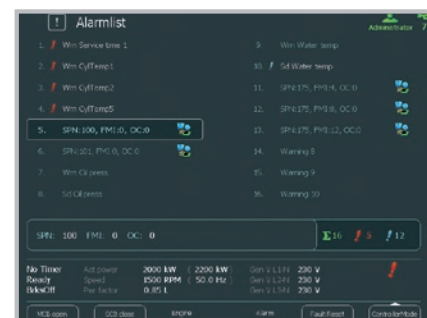
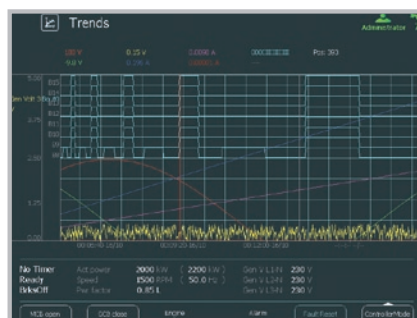
InteliVision with InteliDrive controllers (all possible connections)



InteliVision with IGS-NT controllers (all possible connections)



Screens examples



Features

- ▶ 8" colour TFT display with resolution of 800 × 600 pixels
- ▶ Controlled by active buttons
- ▶ Comes with new TRENDS monitoring screen
- ▶ Windows CE operating system
- ▶ Same language support as InteliGen^{NT} / InteliSys^{NT} and InteliDrive
- ▶ Screen configuration by customer – export to XML format with subsequent manual screen modification and import back to the controller (as IS-Display)
- ▶ This display gives complete access to all control and monitoring functions of InteliGen^{NT} / InteliSys^{NT} and InteliDrive
- ▶ Intended for connection to ONE controller (InteliGen^{NT} / InteliSys^{NT} or InteliDrive type)
- ▶ The same dimensions as IS-Display / InteliSys^{NT} (including cut out dimensions)
- ▶ It is possible to mount IS-NT-BB to the rear side of InteliVision
- ▶ Can be used as a replacement for IG-Display, IS-Display or I-RD-CAN
- ▶ Connection to a controller via RS232/485 and CAN bus
- ▶ Auto configuration based on controller application (as IS-Display)
- ▶ Designed to be mounted in both monitoring and engine room
- ▶ Operating temperature from -20 to + 70°C (-4/158°F)
- ▶ CE certification
- ▶ Sealed to IP65



MANUFACTURER:

LOCAL DISTRIBUTOR / PARTNER:



誥鑫企業有限公司
ARITH COMPANY LTD.
 地址: 台北市復興北路427巷30號
 電話: (02)2717-5038
 傳真: (02)2717-5039
 e-mail: taipei@arith.com.tw
 網址: <http://www.arith.com.tw>