






# Plate Heat Exchanger - Product Leaflet



PHE Product Range

## DESCRIPTION

The high-performance plates from HRS provide the optimum heat exchanger for every thermal problem. High heat transfer coefficients and thus best possible utilisation of the surface guarantee a compact, low price solution to the problem. Plate heat exchangers offer additional flexibility, by changing the number of plates, the heat exchanger can also be adapted to other thermal operating conditions.

	 Threaded connection	 Moulded rubber part	 Metal lining	 Connection with loose flange	 Flange connection
HRS 04/08	.	—	—	.	.
HRS 10/14/16/20/22	.	—	—	.	.
HRS 19/205/31/40/50	—	.	.	.	.
HRS 41/60/80	—	.	.	.	.
HRS 405/70/100/130	—	.	.	—	—
HRS 81/120/160/190	—	.	.	—	—
HRS 200/250/300	—	—	.	—	—

● = available, — = not available

Other connections or bolts on request

## DESIGN CONDITIONS

With the variety of heat transfer plates and flow gaskets we are able to supply heat exchangers with a maximum design temperature of 180°C and design pressure of 16 bar.

## APPLICATIONS

Applications range from heating and cooling of liquids to gas cooling and condensation. Heat recovery is currently another important economic factor and is becoming increasingly significant.

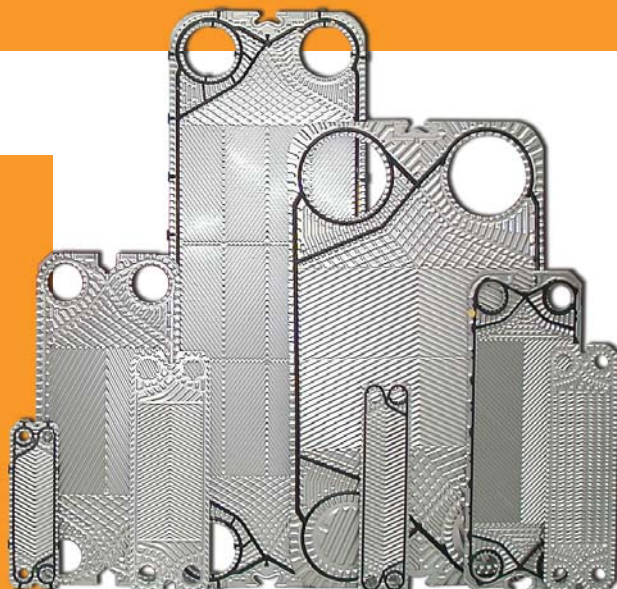
## HEAT TRANSFER PLATES

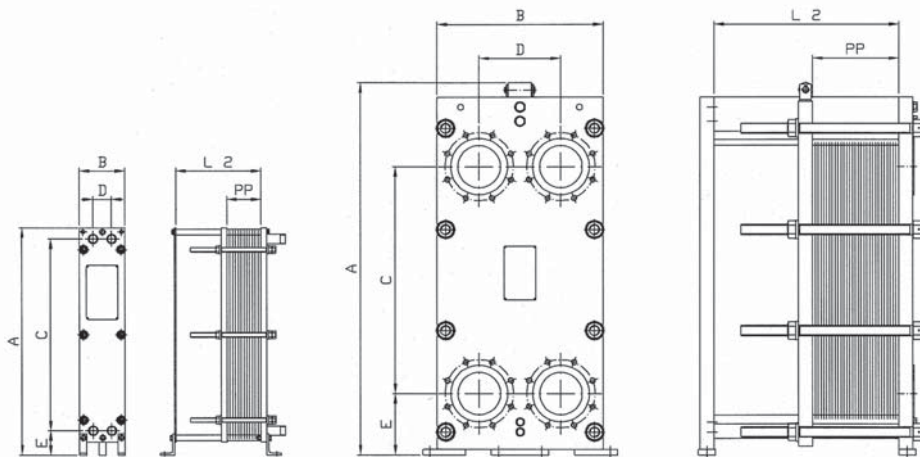
All plates are provided with a double gasket at the ports which prevents mixing of the two media. For safety reasons, the gasket is also provided with a outer leakage groove at the ports. If one of the two gaskets fails and starts to leak, the medium passes to atmosphere.

All plate heat exchangers can be supplied with following gasket materials; NBR, EPDM or Viton.

## HEAT TRANSFER PLATES

The heat transfer plates are characterised by optimum embossing, resulting in high heat transfer coefficients. Variable flow gaps can be generated by a result of the different types and angles of embossing. Heat transfer plates are supplied as standard in material grades AISI 304 or AISI 316 and depending on the operating conditions high grade materials may be offered such as 245 SMO and titanium.





## Dimensions

frame/ pressure rating	max. number of plates	surface/ plate m <sup>2</sup>	A mm	B mm	C mm	D mm	E mm	L 2 mm	PP mm	connec- tions	max. surface m <sup>2</sup>
FP 04-16	125	0.04	460	160	336	65	85	150-600	pcs.x 2.4	1"	5
FP 08-16	150	0.08	799	160	675	65	85	150-600	pcs.x 2.4	1"	12
FP 14-10/16	200	0.14	837	310	590	135	132	250-1000	pcs.x 2.4	2"	28
FP 20-10/16	200	0.20	1066	310	819	135	132	250-1000	pcs.x 2.4	2"	40
FP 10-10/16	200	0.10	735	310	494	126	131	250-1000	pcs.x 2.9	DN 50	20
FP 16-10/16	200	0.15	940	310	694	126	131	250-1000	pcs.x 2.9	DN 50	30
FP 22-10/16	200	0.22	1135	310	894	126	131	250-1000	pcs.x 2.9	DN 50	45
FP 19-6/10/16/25	500	0.20	1080	440	650	202	200	500-3000	pcs.x 3.1	DN 80	100
FP 205-10/16/25	500	0.21	1160	480	719	225	204	500-2500	pcs.x 3.1	DN 100	105
FP 31-6/10/16/25	500	0.30	1332	480	894	225	204	500-3000	pcs.x 3.1	DN 100	150
FP 40-6/10/16/25	500	0.40	1579	480	1141	225	204	500-3000	pcs.x 3.1	DN 100	200
FP 50-6/10/16/25	500	0.50	1826	480	1388	225	204	500-3000	pcs.x 3.1	DN 100	250
FP 41-6/10/16/25	700	0.40	1470	610	941,4	290	225	500-4000	pcs.x 3.5	DN 150	280
FP 60-6/10/16/25	700	0.60	1835	610	1306,2	290	225	500-4000	pcs.x 3.5	DN 150	420
FP 80-6/10/16/25	700	0.80	2200	610	1671	290	225	500-4000	pcs.x 3.5	DN 150	560
FP 405-6/10/16/25	700	0.41	1380	760	770	395	285	500-4000	pcs.x 3.1	DN 200	300
FP 70-6/10/16/25	700	0.68	1740	760	1130	395	285	500-4000	pcs.x 3.1	DN 200	455
FP 100-6/10/16/25	700	1.00	2100	760	1490	395	285	500-4000	pcs.x 3.1	DN 200	700
FP 130-6/10/16/25	700	1.30	2460	760	1850	395	285	500-4000	pcs.x 3.1	DN 200	910
FP 81-6/10/16/25	700	0.80	1930	980	1100	480	365	1280-3780	pcs.x 3.8	DN 300	585
FP 120-6/10/16/25	700	1.20	2320	980	1490	480	365	1280-3780	pcs.x 3.8	DN 300	875
FP 160-6/10/16/25	700	1.60	2710	980	1879	480	365	1280-3780	pcs.x 3.8	DN 300	1120
FP 190-6/10/16/25	700	1.90	3100	980	2267	480	365	1280-3780	pcs.x 3.8	DN 300	1330
FP 200-6/10/16	700	2.00	2855	1370	1822	672	480	1280-3780	pcs.x 4.1	DN 500	1400
FP 250-6/10/16	700	2.50	3211	1370	2178	672	480	1280-3780	pcs.x 4.1	DN 500	1750
FP 300-6/10/16	700	3.00	3567	1370	2534	672	480	1280-3780	pcs.x 4.1	DN 500	2100

more types and sizes on request

Subject to change without notice

pcs. = number of plates



誥鑫企業有限公司 ARITH COMPANY LTD.

地址：台北市復興北路427巷30號

電話：(02)2717-5038

傳真：(02)2717-5039

e-mail: taipei@arith.com.tw

網址：http://www.arith.com.tw