

## Features

- Ten year factory warranty
- Plug in measuring module
- Double insulated high impact polystyrol case
- Termination socket included for surface mounting enabling front or rear connection with optional DIN rail mounting
- Proven circuit designs based on over 15 years of field service in hundreds of varied & demanding applications
- Easy to set calibration scales
- Tolerance to shock & vibration for generator, compressor & mobile applications

## Technical Data

### AUXILIARY SUPPLY

Order code	Vx nominal
1L710-L	110V AC
1L710-M	240V AC
1L710-N	415V AC

### POWER CONSUMPTION

<3.2VA maximum

### SUPPLY TOLERANCE

-20% to +10% of nominal

### OPEN CIRCUIT PROBE VOLTAGE

7V 50Hz

### SHORT CIRCUIT PROBE CURRENT

0.9mA 50Hz

### SENSITIVITY

2,000 TO 20,000 Ohms

### OUTPUT CONTACTS

2 C/O with 1KV isolation across contacts

### SWITCHING CAPACITY

5 Amp 250V AC resistive

5 Amp 30V DC resistive

### OPERATING TEMPERATURE RANGE

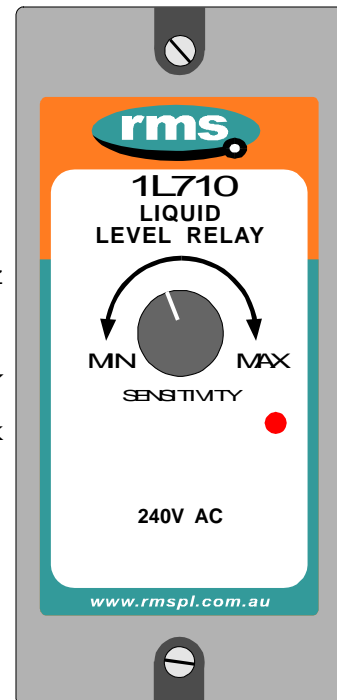
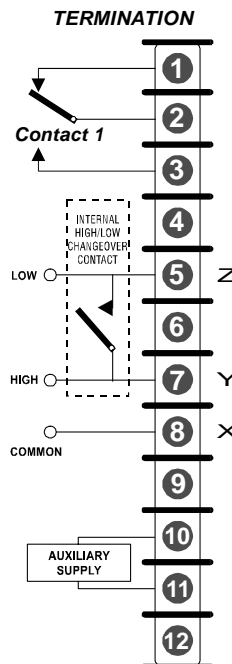
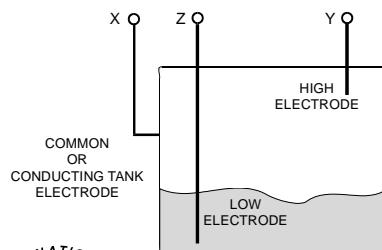
-5 to 55 degrees C.

### INSULATION WITHSTAND

In accordance with IEC 255-5: 2KV RMS between input & frame, output & frame, & output & input. 1.2/50 5KV impulse between each terminal & earth, between circuits not normally connected together & between terminals of the same circuit.

### NOISE IMMUNITY

Withstands the high frequency interference test detailed in IEC 255-22-1.



## Description

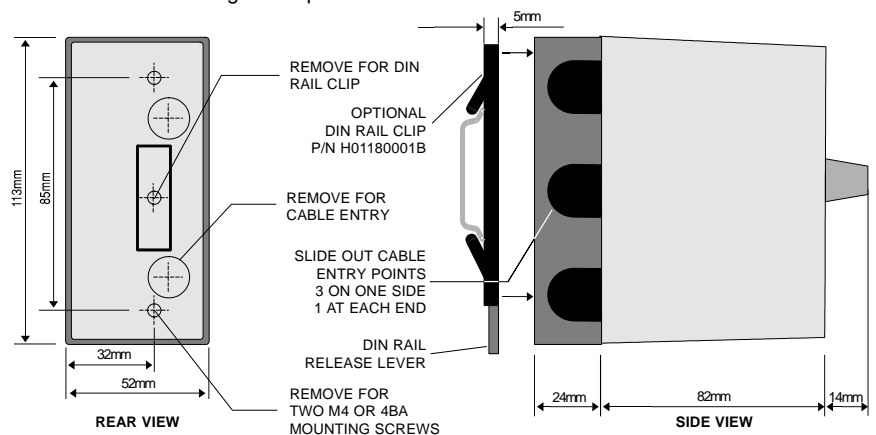
Made in Australia

The 1L710 Series relays are solid state liquid level detecting relays with electromechanical output contacts. Designed for application on auxiliary mains voltages the 1L710 provides an isolated low voltage to the liquid immersion probes. Due to the low voltage AC signals applied between electrodes, the effects of damaging electrolytic action is eliminated. The unit is ideally suited for measuring high and/or low levels of conductive liquids in storage tanks wherever high accuracy and reliable, maintenance free operation is essential.

The 700 Series range of electronic measuring relays are manufactured as a modular approach to electrical system protection & control. Designed to meet rigid Australian & international specifications the 700 Series provide a flexible, cost effective & extremely reliable solution for a multitude of applications under electrically hostile conditions.

## Application

The 1L710 monitors the resistance across two conductive probes to determine if there is liquid present between them. A HIGH & LOW PROBE plus common should be inserted as shown in the diagram. The sensitivity of the unit is set such that the relay will pick up when the fluid level falls below the end of the LOW probe. When this occurs the 1L710 automatically switches to monitor the HIGH probe and will cause the output relay to drop out when the liquid reaches this level. A typical application of the 1L710 would be to start a replenishing pump when a low liquid level is detected in the tank. The pump would be switched off when the high level probe was reached.



### **Australian Content**

Unless otherwise stated the product(s) quoted are manufactured by RMS at our production facility in Melbourne Australia. Approximately 60% of our sales volume is derived from equipment manufactured in house with a local content close to 90%. Imported components such as semi-conductors are sourced from local suppliers & preference is given for reasonable stock holding to support our build requirements.

### **Quality Assurance**

RMS holds NCSI (NATA Certification Services International), registration number 6869 for the certification of a quality assurance system to AS/NZS ISO9001-2000. Quality plans for all products involve 100% inspection and testing carried out before despatch. Further details on specific test plans, quality policy & procedures may be found in section A4 of the RMS product catalogue.

### **Product Packaging**

Protection relays are supplied in secure individual packing cardboard boxes with moulded styrene inserts suitable for recycling. Each product & packing box is labeled with the product part number, customer name & order details.

### **Design References**

The products & components produced by RMS are based on many years of field experience since Relays Pty Ltd was formed in 1955. A large population of equipment is in service throughout Australia, New Zealand, South Africa & South East Asia attesting to this fact. Specific product & customer reference sites may be provided on application.

### **Product Warranty**

All utility grade protection & auxiliary relay products, unless otherwise stated, are warranted for a period of 24 months from shipment for materials & labour on a return to factory basis. Repair of products damaged through poor application or circumstances outside the product ratings will be carried out at the customer's expense.

### **Standard Conditions of Sale**

Unless otherwise agreed RMS Standard Terms & Conditions (QF 907) shall apply to all sales. These are available on request or from our web site.



## **Relay Monitoring Systems Pty Ltd**

6 Anzed Court, Mulgrave, Victoria 3170, AUSTRALIA



**誥鑫企業有限公司**  
**ARITH COMPANY LTD.**

地 址：台北市復興北路427巷30號  
電 話：(02)2717-5038  
傳 真：(02)2717-5039  
e-mail: [taipei@arith.com.tw](mailto:taipei@arith.com.tw)  
網 址： <http://www.arith.com.tw>