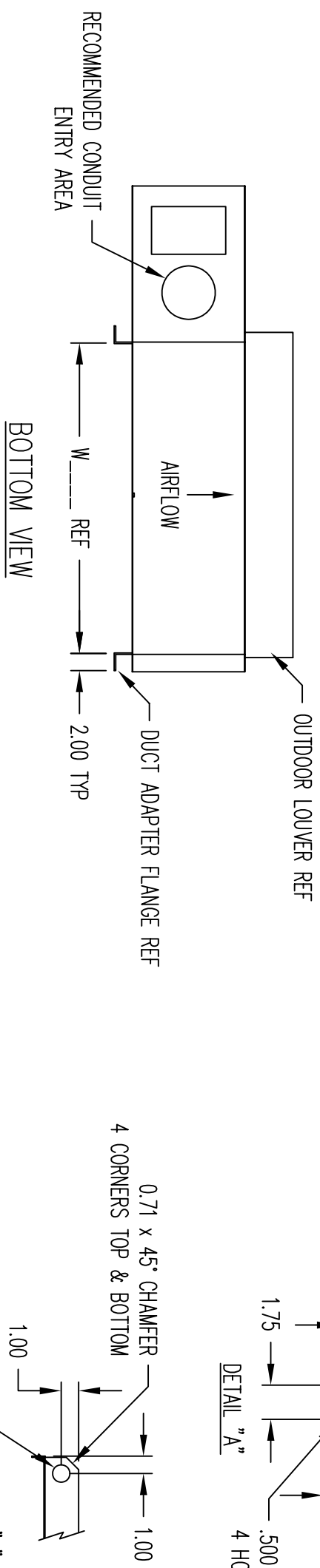
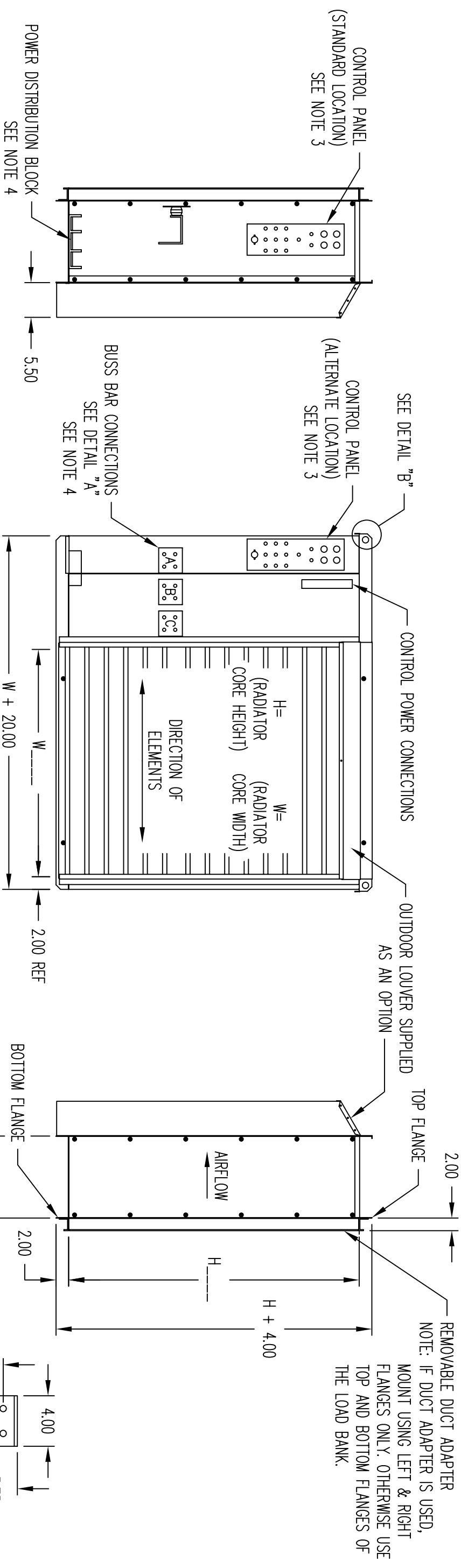



**AVTRON MODEL K711
RADIATOR MOUNTED LOAD BANK,
OUTLINE DRAWING SET**



FOR APPLICATION ENGINEERING USAGE ONLY

4. POWER DISTRIBUTION BLOCK OR BUSS BARS SUPPLIED DEPENDING ON LOAD BANK VOLTAGE AND KW.
 3. THE CONTROL PANEL IS NOT AT THIS LOCATION IF IT IS SUPPLIED OPTIONALLY AS A REMOTE 19" RACK MOUNT COMPONENT OR IF IT'S MOUNTED ON THE EXHAUST SIDE OF THE LOAD BANK AS SHOWN ALTERNATELY.
 2. ALL DIMENSIONS ARE APPROX.
 1. WEIGHT:
- NOTES:

THIS DOCUMENT CONTAINS PROPRIETARY INFORMATION OF AVTRON MFG., INC. AND MAY NOT BE DISCLOSED TO OTHERS OR USED FOR MANUFACTURING PURPOSES WITHOUT THE WRITTEN CONSENT OF AVTRON MFG.				DRAWING NUMBER SB2203	
CE640	G	ADDED "BOTTOM VIEW". JFL/AUTO	11-13-06	D.STACK	 <p>AVTRON MANUFACTURING, INC. INDEPENDENCE, OH</p> <p>LOAD BANK K711</p>
CD980	F	ADDED CHAMFERS FACKELMANN TO TOP & BOTTOM RAILS, ADDED LOUVER DEPTH DIMENSION	3/15/05	J.WEMERY	
CD734	E	REV'D & REDRAWN FACKELMANN PER ECN	6/28/04	K.KUK	
ECN NO.	REV LET.	CHANGE	CHG'D	CHK'D	
			DRAWN	E.JAMIOL	DATE 5/13/92
			CHECKED		SCALE 1/16
			APPROVED D.Bohrer		SHT 1 OF 1
					OUTLINE DRAWING

CONTROL PANEL

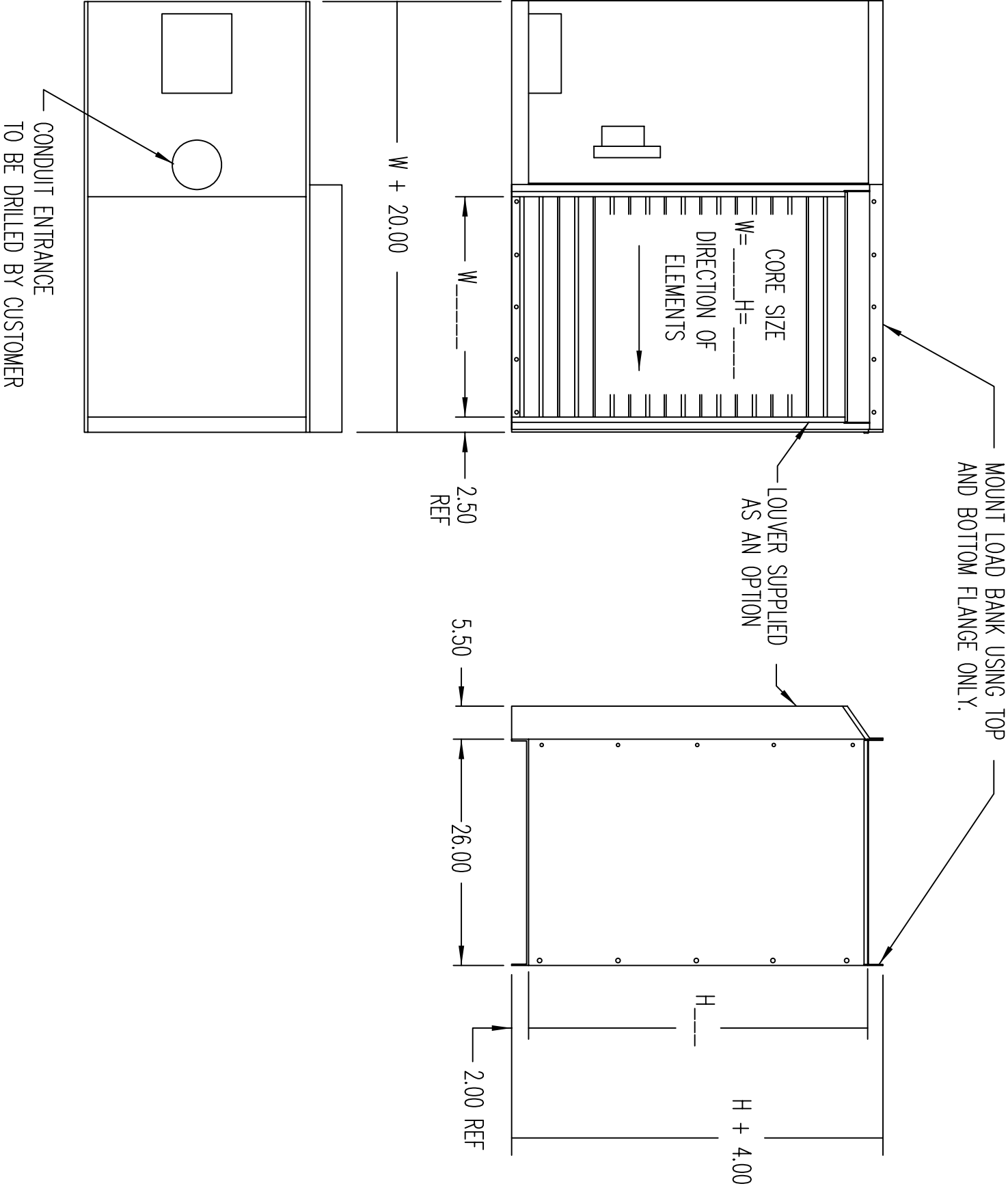
IF OPTION "A" IS SUPPLIED WITH LOAD BANK THE CONTROL PANEL IS NOT INSTALLED ON LOAD BANK IN THIS LOCATION. IT IS PROVIDED AS A REMOTE 19" RACK MOUNT COMPONENT.

POWER DISTRIBUTION BLOCK

SEE NOTE 4

POWER DISTRIBUTION BLOCK SUPPORT BRACKET

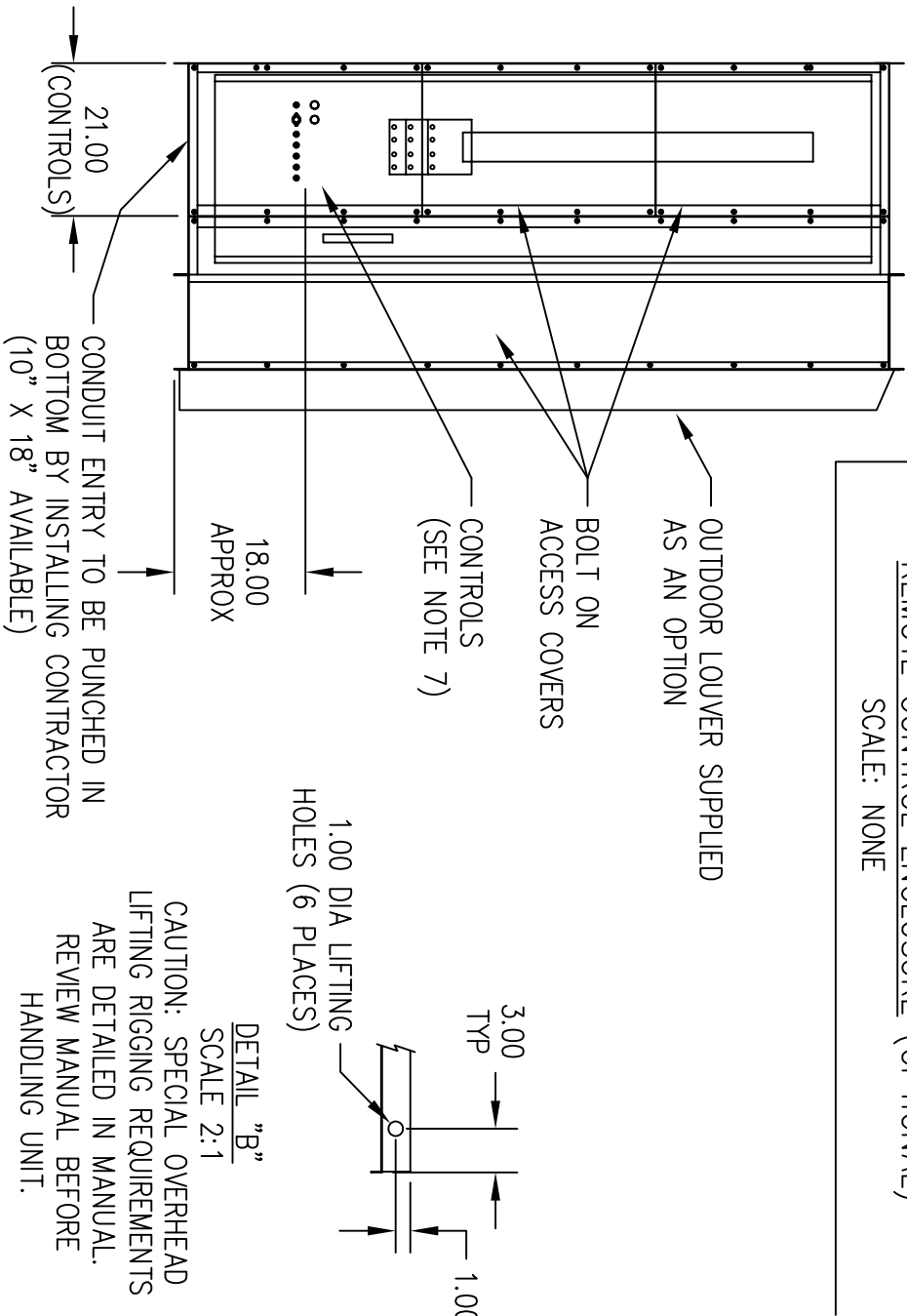
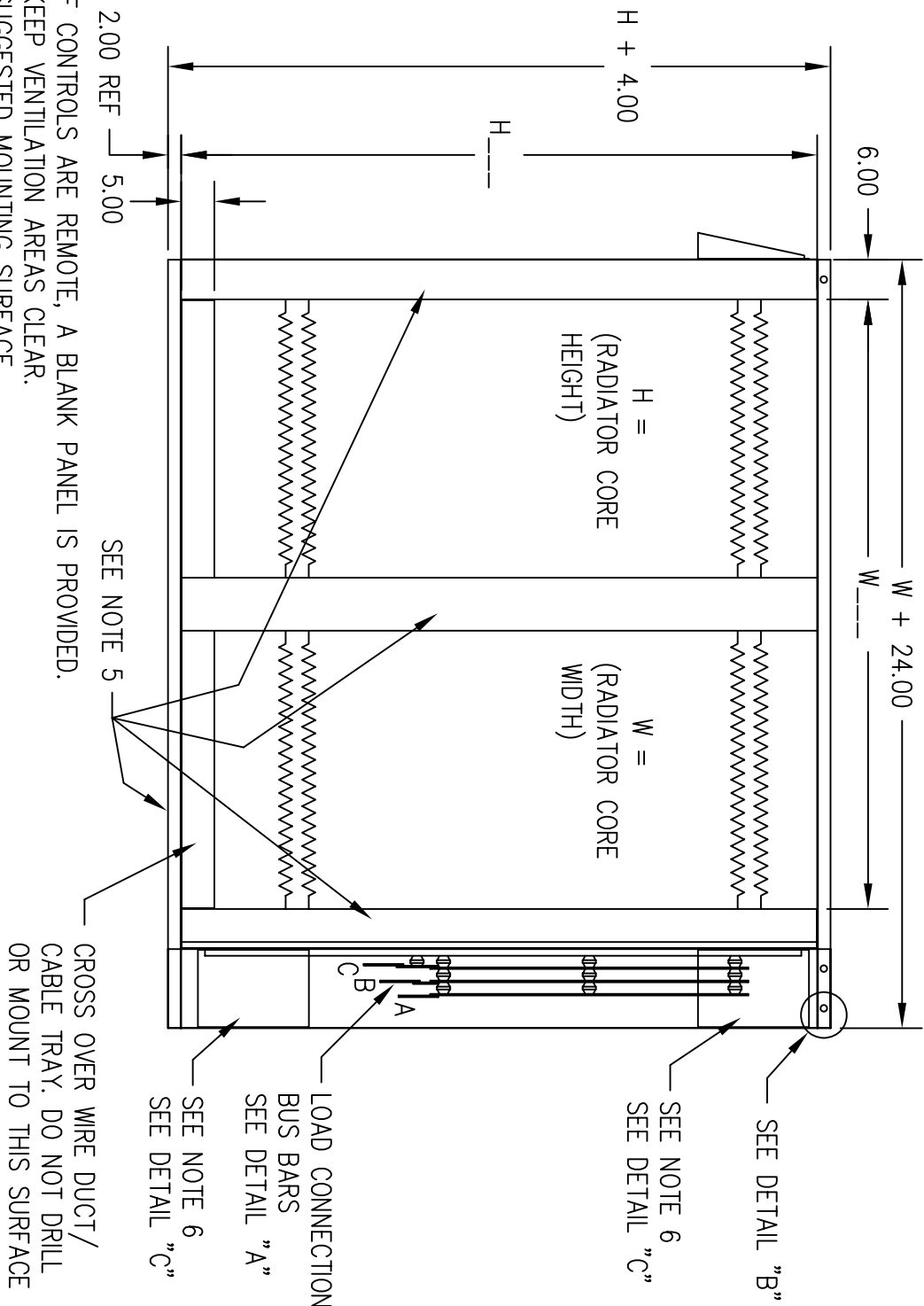
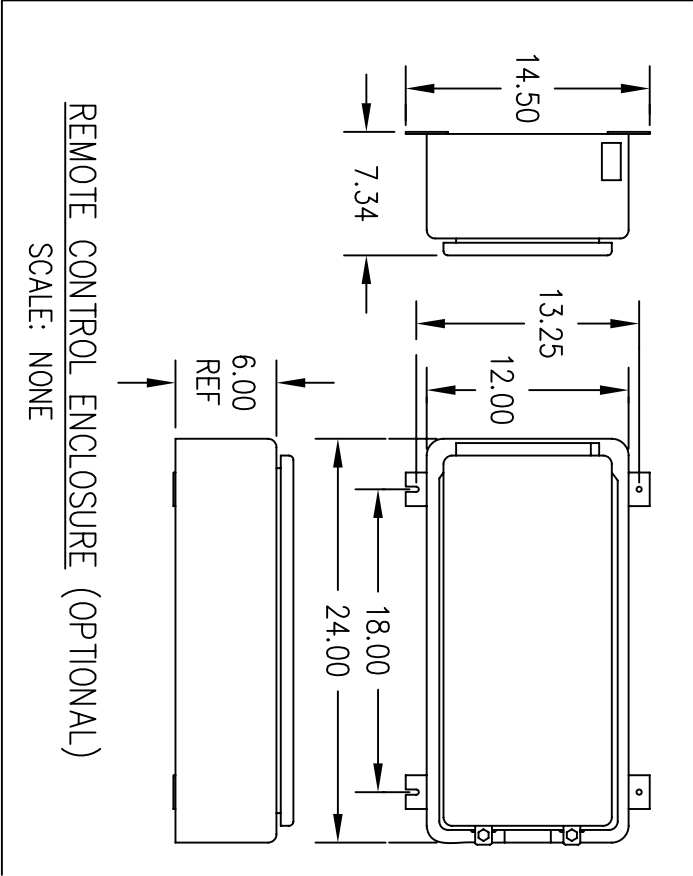
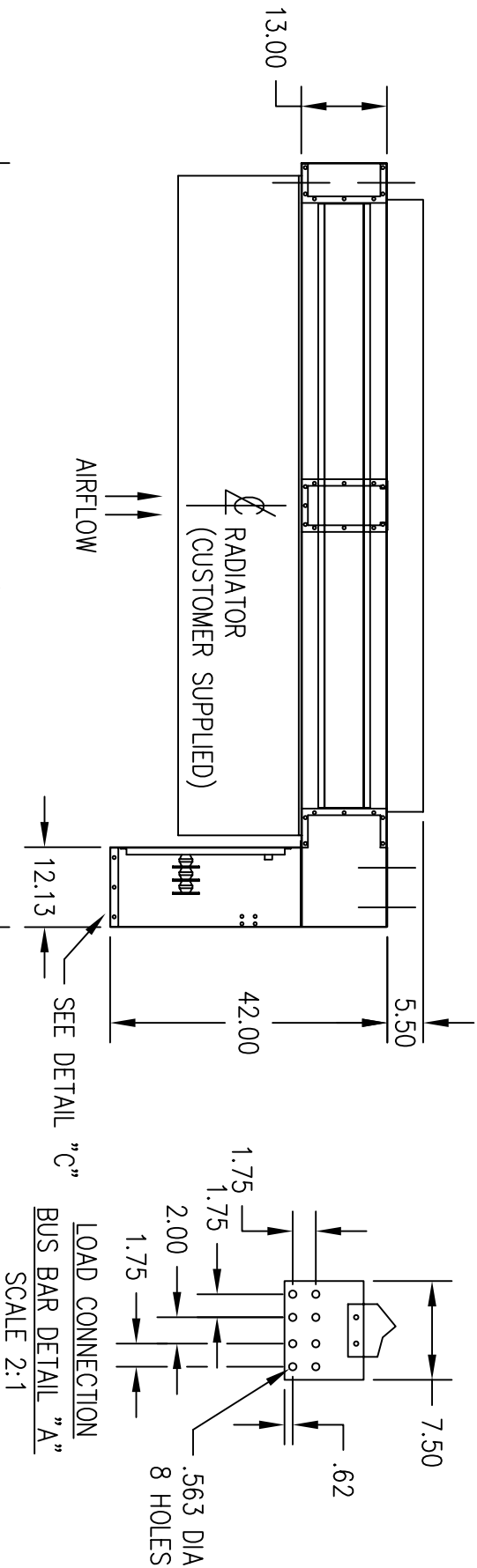
SEE NOTE 4



- 4 – POWER DISTRIBUTION BLOCK(S) PROVIDED ON SUPPORT BRACKET DEPENDING ON LOAD BANK VOLTAGE AND KW.
- 3 –
2. ALL DIMENSIONS ARE APPROX.
1. WEIGHT:
- NOTES:

THIS DOCUMENT CONTAINS PROPRIETARY INFORMATION OF AVTRON MFG., INC. AND MAY NOT BE DISCLOSED TO OTHERS OR USED FOR MANUFACTURING PURPOSES WITHOUT THE WRITTEN CONSENT OF AVTRON MFG.										DRAWING NUMBER SB22287	
GF025	E	REMOVED NOTE 3.	J.FLAUTO	12-5--07	LHUDSON						
CD325	D	REV PER ECN	FACKELMANN	3/4/03	K.KUK	DRAWN	SCHAEFER	DATE	06/08/93		
		CONVERTED CAD FILE	Zeleznik	2/26/99	PALINKAS					★ AVTRON MANUFACTURING, INC. INDEPENDENCE, OH	
AB525	C	REV PER ECN	D.LOREK	7/25/95	BOHRER	CHECKED					
	B	REV PER ECN	Zivkovic	6/1/94	BOHRER			SCALE	NONE		
Z8237	A	2.50 REF WAS 2.00 REF	SCHAEFER	6/17/93	BOHRER	APPROVED	BOHRER			LOAD BANK K711A	
ECN NO.	REV LET.	CHANGE	CHG'D	CHK'D							
										OUTLINE DRAWING	

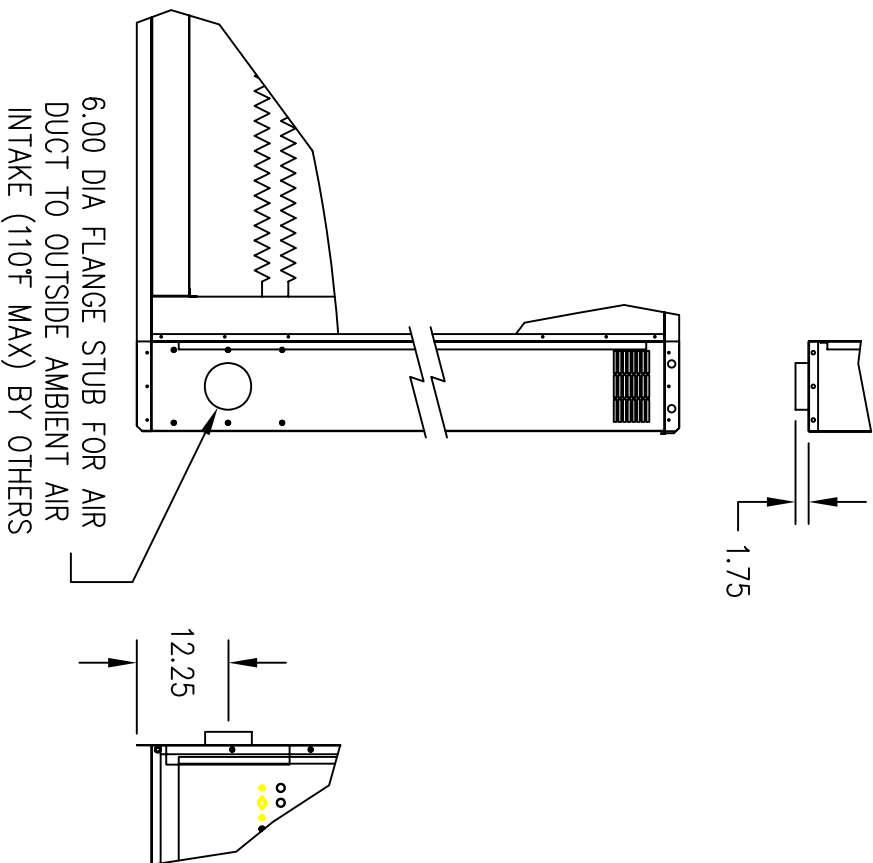
FOR APPLICATION ENGINEERING USAGE ONLY



FOR APPLICATION ENGINEERING USAGE ONLY

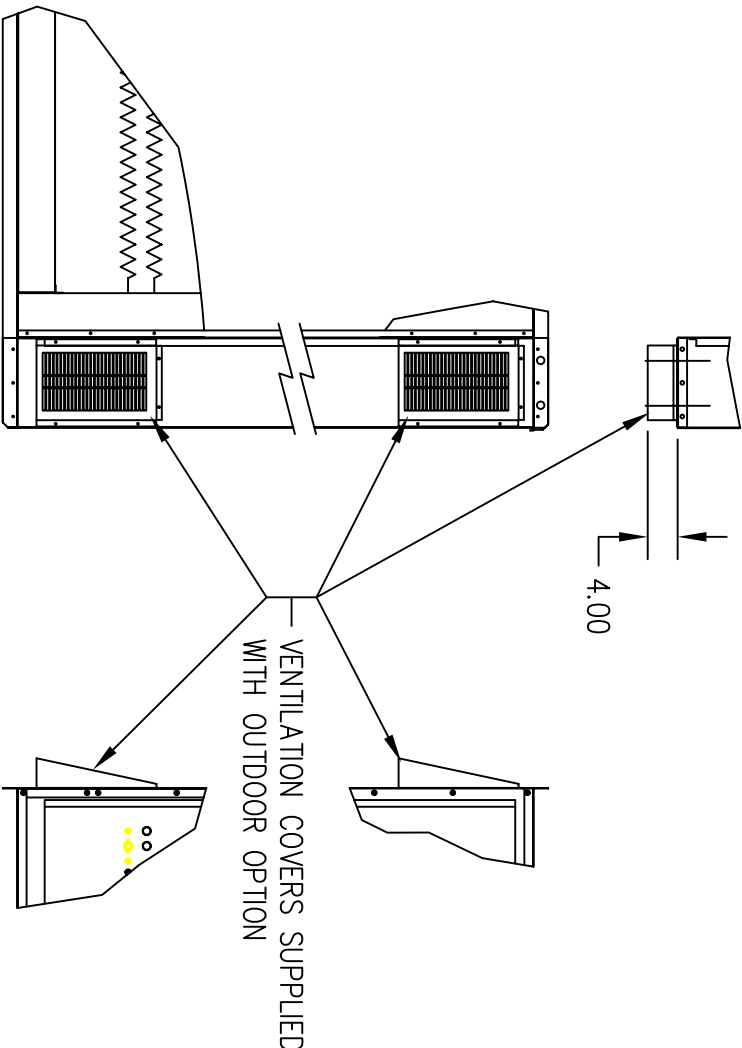
(ONLY OUTDOOR UNITS ARE PAINTED)									
3. SEE MANUAL FOR INSTALLATION, OPERATION AND MAINTENANCE PROCEDURES.									
2. ALL DIMENSIONS ARE APPROX.									
1. WEIGHT:									
NOTES:									
THIS DOCUMENT CONTAINS PROPRIETARY INFORMATION OF AVTRON MFG., INC. AND MAY NOT BE DISCLOSED TO OTHERS OR USED FOR MANUFACTURING PURPOSES WITHOUT THE WRITTEN CONSENT OF AVTRON MFG.									
CE359	C	REV PER ECN, ADDED SHEET 2	FACKELMANN	3/2/06	HUDSON	DRAWN Fackelmann		DATE 8/20/04	<div><div>★</div><div>AVTRON</div><div>MANUFACTURING, INC. INDEPENDENCE, OH</div></div>
CD854	B	REV. ADD DETAIL B & VENT. JFLAUTO	11-9-04	K.KUK		CHECKED JFLAUTO	8/31/04	LOAD BANK	
CD820	A	REV PER ECN	FACKELMANN	10/8/04	K.KUK	APPROVED K.KUK	SCALE 3/64		
ECN NO.	REV LET.	CHANGE		CHG'D	CHK'D	MODEL K711			
DRAWING NUMBER SB3431									
SHT 1 OF 2									
OUTLINE DRAWING									

VENTILATION INTAKE DETAIL FOR
LOAD BANKS DESIGNED FOR
MOUNTING INSIDE GENERATOR ENCLOSURE



DETAIL C

VENTILATION INTAKE DETAIL FOR
LOAD BANKS DESIGNED FOR
MOUNTING OUTSIDE ENCLOSURE (INDOOR/OUTDOOR)



MOUNTING NOTES:

1. When Load Bank is mounted off face of indicated surfaces there must be a minimum of one mounting fastener every 18" of perimeter.
2. The 2" bottom flange can be used to support 90% of the unit static weight, if the following two conditions are met:
 - a) Loading must be distributed over the entire base.
 - b) The other indicated surfaces dictate a requirement to attach to a rigid support structure.
3. Unit may be pedestal (base) mounted (by others) to support Load Bank weight, but must be top anchored to a rigid structure support.
4. Regardless of mounting method the 42" control/load connection section must be base supported.

NOTES:

CE359	C	REV PER ECN, ADDED DETAIL C	FACKELMANN	3/2/06	HUDSON
ECN NO.	REV LET.	CHANGE	CHG'D	CHK'D	

THIS DOCUMENT CONTAINS PROPRIETARY INFORMATION OF AVTRON MFG., INC. AND MAY NOT BE DISCLOSED TO OTHERS OR USED FOR MANUFACTURING PURPOSES WITHOUT THE WRITTEN CONSENT OF AVTRON MFG.		DRAWING NUMBER SB3431 SHT 2 OF 2 OUTLINE DRAWING	
★ AVTRON MANUFACTURING, INC. INDEPENDENCE, OH		LOAD BANK	

FOR APPLICATION ENGINEERING USAGE ONLY